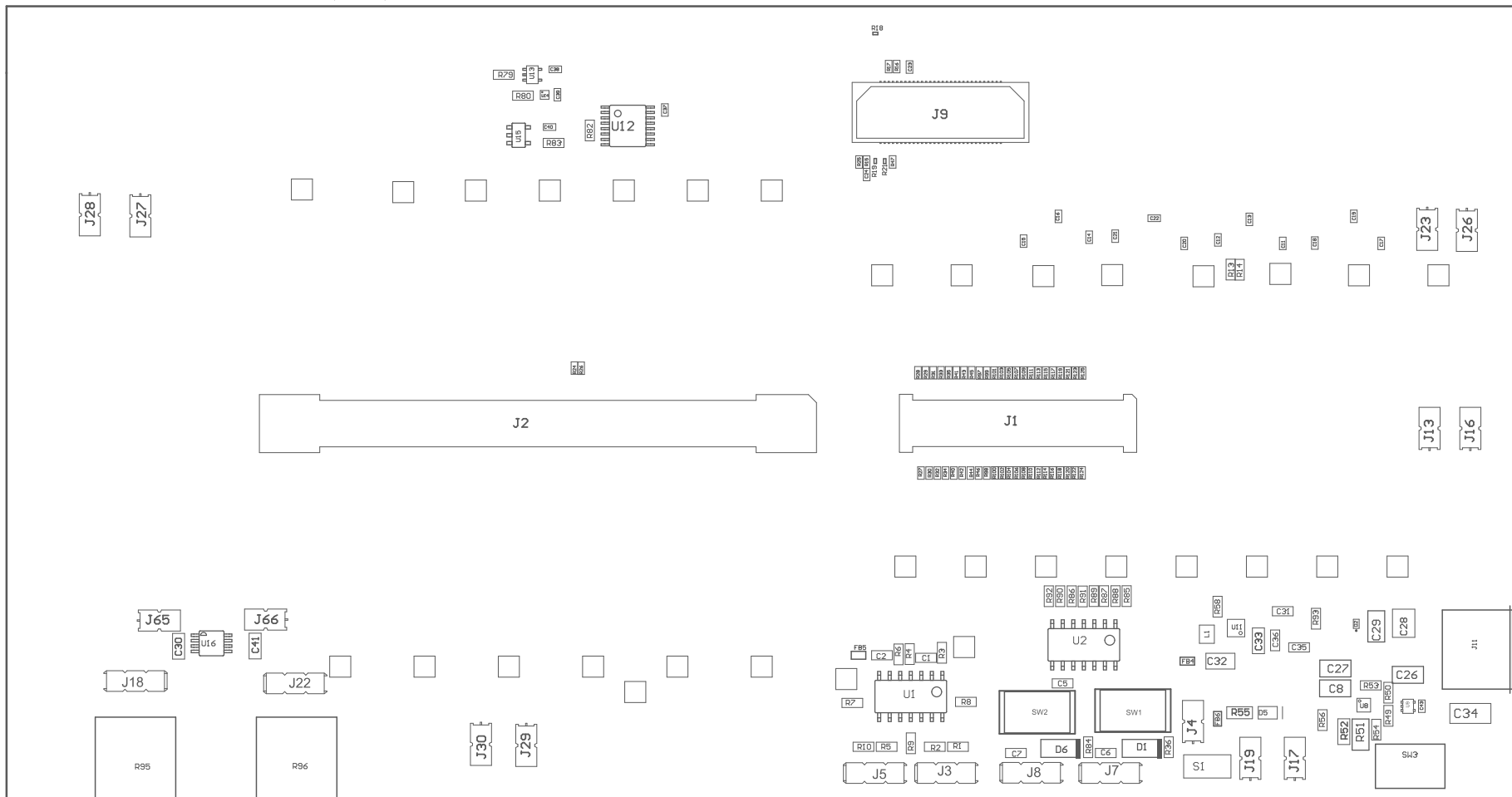
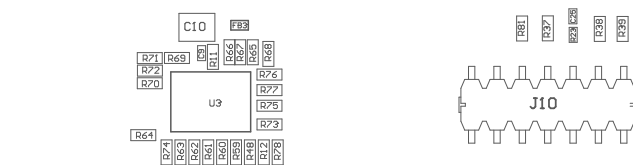


ZZ1 ~~221~~ This is a schematic drawing of a printed circuit board (PCB) assembly. It shows the layout of components on the top side of the board. The components are labeled with their part numbers and values. The board is oriented with the top edge at the top of the drawing. The components are arranged in a grid-like pattern. The board is labeled with 'PCB VIEWED FROM TOP SIDE' and 'BOARD #: PROC148'. The revision is 'REV: A'. The SUN REV is 'Not in version control'. The TID # is 'N/A'. The plot name is 'Top Assembly Drawing'. The date and time of generation are '11/3/2022 10:19:38 AM'. The company is 'TEXAS INSTRUMENTS'.



COMPONENTS MARKED 'DNP' SHOULD NOT BE POPULATED.  
001

PCB VIEWED FROM TOP SIDE	BOARD #: PROC148	REV: A	SUN REV: Not in version control
	TID #: N/A		
PLOT NAME = Top Assembly Drawing	GENERATED : 11/3/2022 10:19:38 AM	TEXAS INSTRUMENTS	



COMPONENTS MARKED 'DNP' SHOULD NOT BE POPULATED.  
ASSEMBLY VARIANT: 001

PCB VIEWED FROM BOTTOM SIDE	BOARD #: PROC148	REV: A	SUN REV: Not in version control
	TID #: N/A		
PLOT NAME = Bottom Assembly Drawing	GENERATED : 11/3/2022 10:19:39 AM	TEXAS INSTRUMENTS	